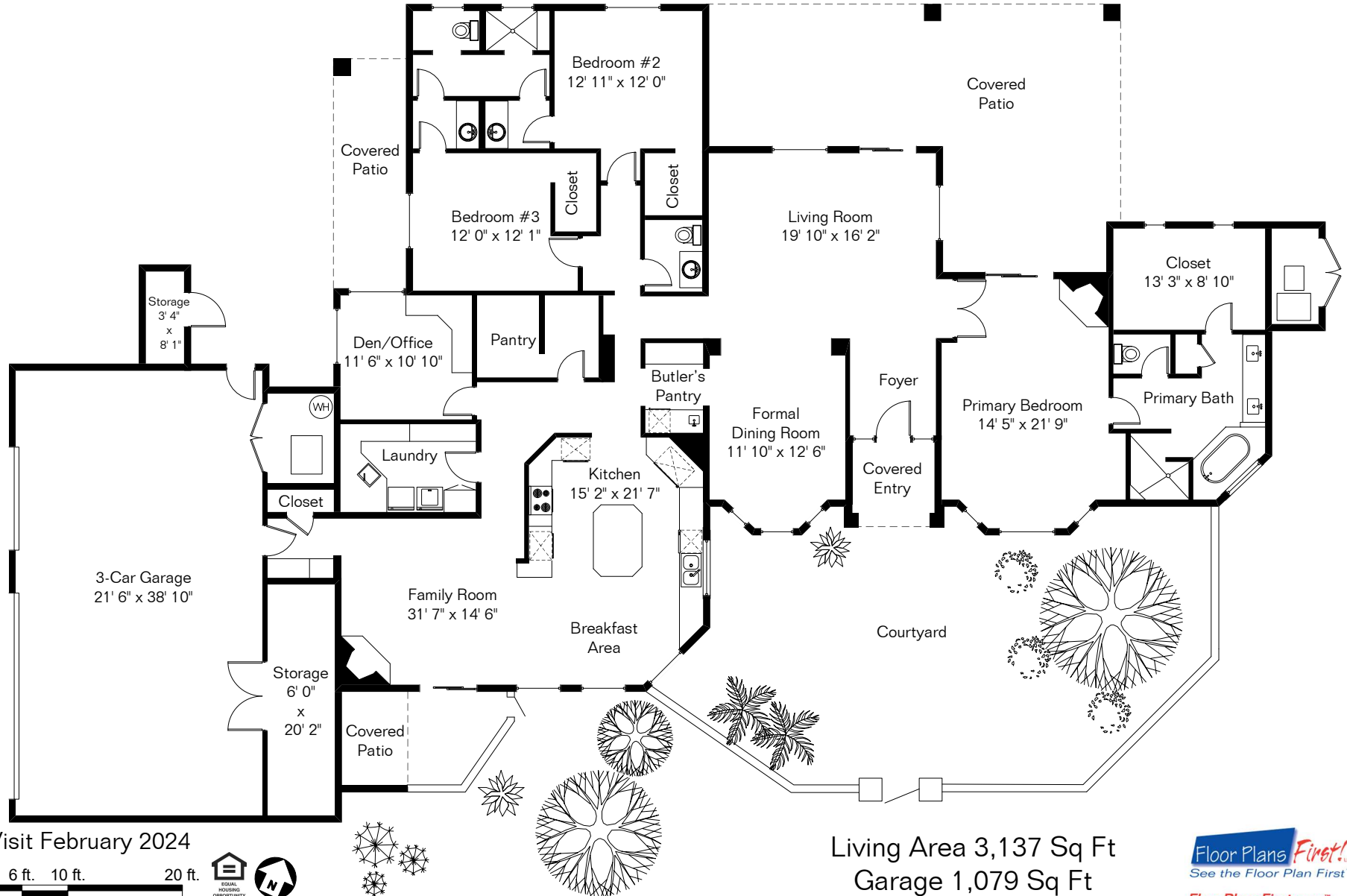


The square footages and room size information are deemed to be reliable but are not guaranteed and should be independently verified. This drawing is for marketing purposes only.

# 109 E Loch Lomond Place

Presented by Pam Treece  
Long Realty Company  
(520) 275-2664



Site Visit February 2024

0 ft. 6 ft. 10 ft. 20 ft.



Copyright 2024 Floor Plans First! LLC  
All Rights Reserved.

Living Area 3,137 Sq Ft  
Garage 1,079 Sq Ft

Floor Plans First!  
See the Floor Plan First!  
FloorPlansFirst.com™  
(520) 881-1500